

First Presbyterian Church Kasson, MN
Pastor Dan Yeazel

November 26, 2017

10:00 a.m.

We Approach God

Announcements

Prelude

Organ plays for a time of silent meditation.

Choral Introit

***Call to Worship**

L: Our help is in the name of the Lord who made heaven and earth.

P: We glorify our God with songs of thanksgiving and joy.

L: God has done great things for us, filling us with grace.

P: God fed our ancestors in the wilderness, God clothes us with hope.

L: We will offer our hearts to God, always saying, 'Thank you!' to the
One who loves us.

P: We will sing our praises, shouting of God's presence in our lives.

*Hymn No. 220

All People That on Earth Do Dwell

Prayer of Confession (in Unison)

We stock the food pantries, but brush aside those who hunger for friendship. We give our hand-me-downs away, but overlook those whose hopes have been striped away. We glad-hand those like us, but turn a deaf ear to our neighbors with an accent. Forgive us, Hope of the ages. You persistently search for us in the side streets of the world, gathering us up and bringing us home, so we may be drenched in the waters of your bottomless pool of forgiveness, watched over by your Child, Jesus Christ, our Lord and Savior.

*Words of Assurance

*Gloria Patri - Hymn No. 579

Responsive Reading

Psalm 100

(OT pg. 679)

We are Inspired by God

* Hymn No. 2233

Where Children Belong

This, this is where children belong, welcomed as part of the worshipping throng. Water, God's Word, bread and cup, prayer, and song: This is where children belong.

Children's Time

* Hymn No. 407

When a Poor One

Scriptures

Matt. 25:31-46(NT pg. 35)

Sermon

"When Was It?"

We Respond to God

Prayer Requests

Choral Call to Prayer

The Pastoral Prayer and The Lord's Prayer

Congregational Amen No. 570

Call for Offering

Offertory

"King of Glory" by R. Dennis; arr by M. Hayes

*Doxology No. 592

*Prayer of Dedication (in Unison)

We may not be hungry, but there are those who are. We may not be parched from thirst, but there are those who do. We may not worry about health care, or have someone in prison, or have to wear clothes tossed aside by others, but many of our sisters and brothers find themselves in such lives. But we have been blessed by you. So may these gifts we offer be used to everyone might know that your community of compassion, of hope, of grace, of life is for everyone. This we ask in the name of Jesus. Amen.

Anthem

"Come to the Table"

by Joseph Martin

Sacrament of the Lord's Supper

Invitation

* Communion Hymn No. 513 Let Us Break Bread Together

Words of Institution

Sharing of elements

*Hymn No. 2178

Here Am I

*Benediction

*Dismissal Hymn No. 2241 (4th verse) *The Spirit Sends Us Forth to Serve*

"Then let us go to serve in peace, the gospel to proclaim. God's Spirit has empowered us; we go in Jesus' name."

*Postlude

WELCOME VISITORS. Thank you for coming to worship with us.
Please sign our guest book before you leave.

Sunday School and Communicants Class 9:00 am

Sunday Worship at 10:00 am

Fellowship at 11:00 am

Office hours M & W 8-12

Our Website is www.presbykasson.org

Email: Pastordan@presbykasson.org, Janet's

janet@presbykasson.org, presbykasson@kmtel.com

Ushers: Howard Gransee, Bob Tracy, Steve Springsted, Dick Wolff

The Sacrament of Communion will be served today. Presbyterians practice open communion. The bread and grape juice will be passed through the congregation. Please hold the bread, and later the cup, until all are served. We will eat the bread, and then drink the cup together showing unity in Christ.

Prayer Shawl ministry meets every Tuesday at 10:00 am.

Choir meets every Wednesday at 7:00 pm.

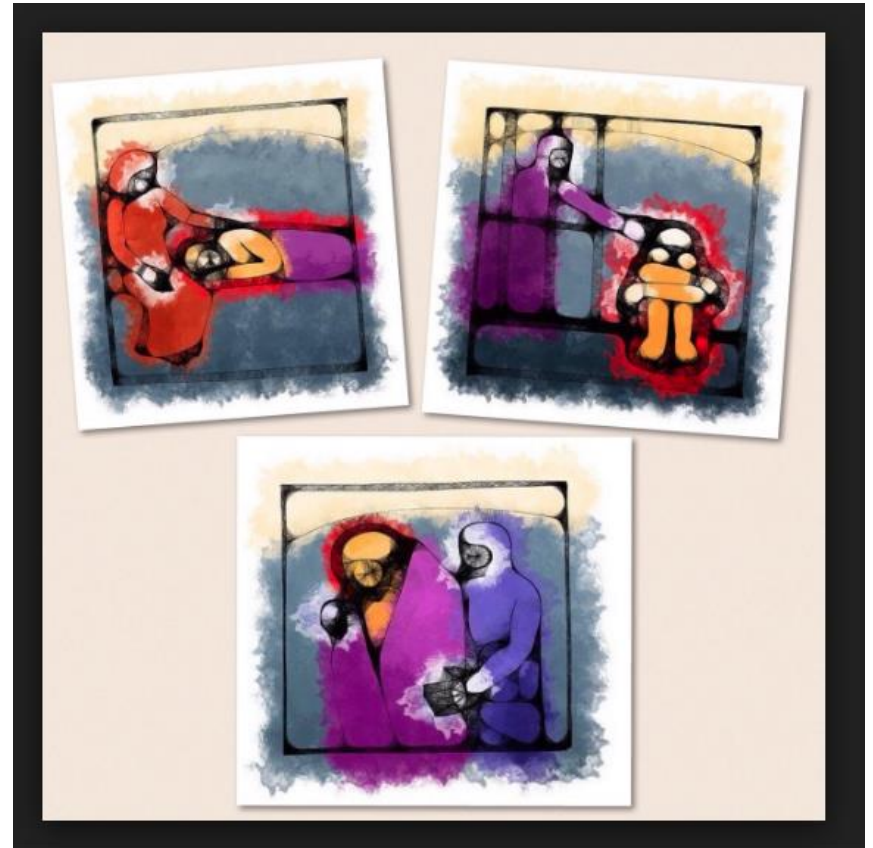
Please pick up your Newsletter in the Fellowship Hall.

NAMI will meet November 28th from 7:00-8:30 pm.

There will be a special congregational meeting to elect Elders and Deacons, December 3rd after worship.

Afternoon circle will meet Thursday, December 7th at 2:00 pm at Dusty's home.

The 2017 Poinsettia Memorial Tree signup is posted on the PW bulletin board near the kitchen. Let's fill the tree!



FIRST PRESBYTERIAN CHURCH
6th Avenue and 1st ST NW
Kasson, MN